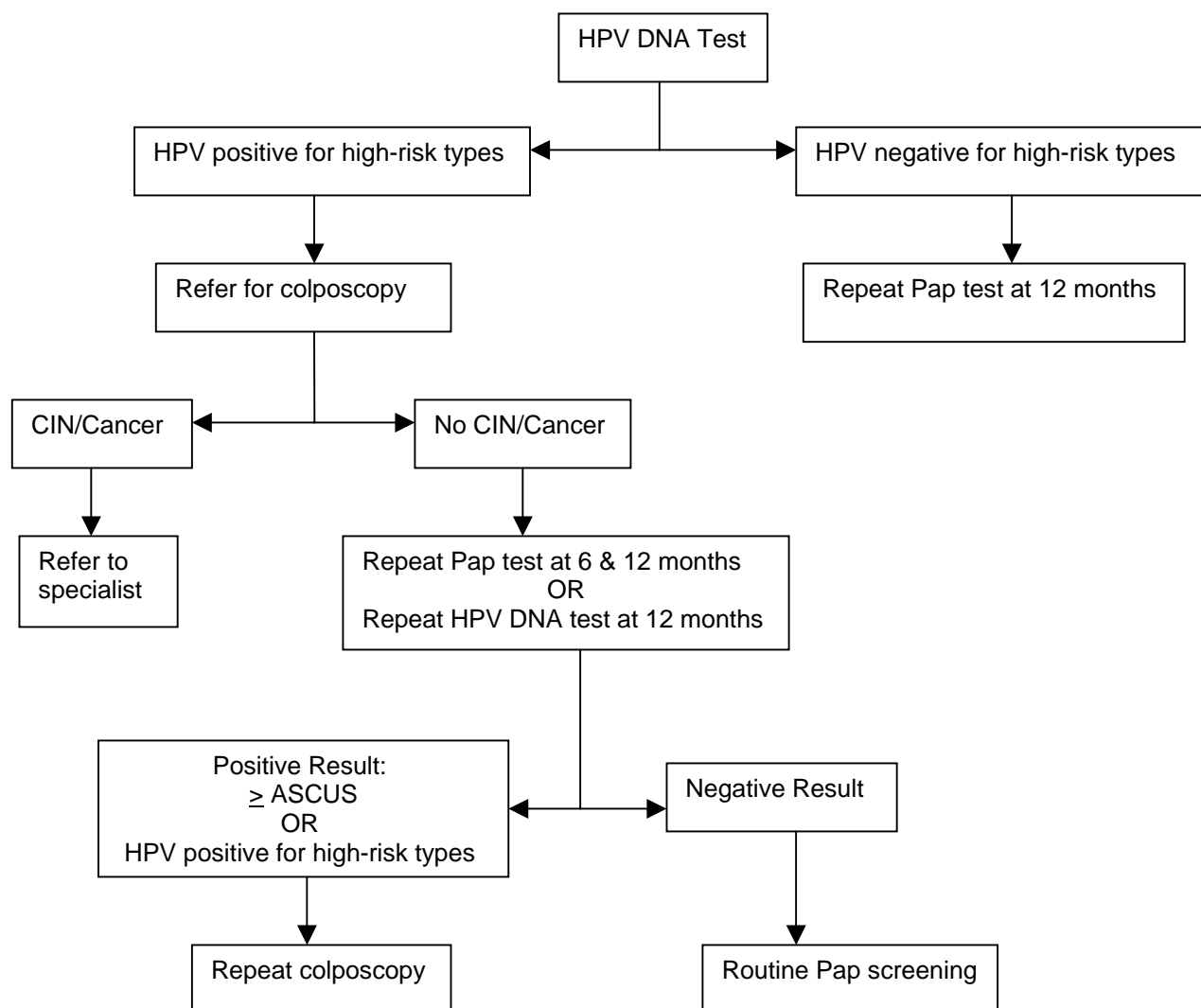




APPENDIX 1. HPV DNA TESTING: TRIAGE FOR WOMEN > AGE 30 WITH ASCUS



Note: This is a hotly debated topic at present (August 2007). There are no clear Canadian directions yet. The above algorithm should be taken as a “possible” scenario only. Physicians should consult either with local provincial guidelines (lacking in many jurisdictions) or with local experts.

Adapted from: Wright JD, Pinto AB, Powell MA, Lu DW, Gao F, Pinto KR. Atypical squamous cells of undetermined significance in girls and women. *Obstet Gynecol* 2004; 103(4):632-638.