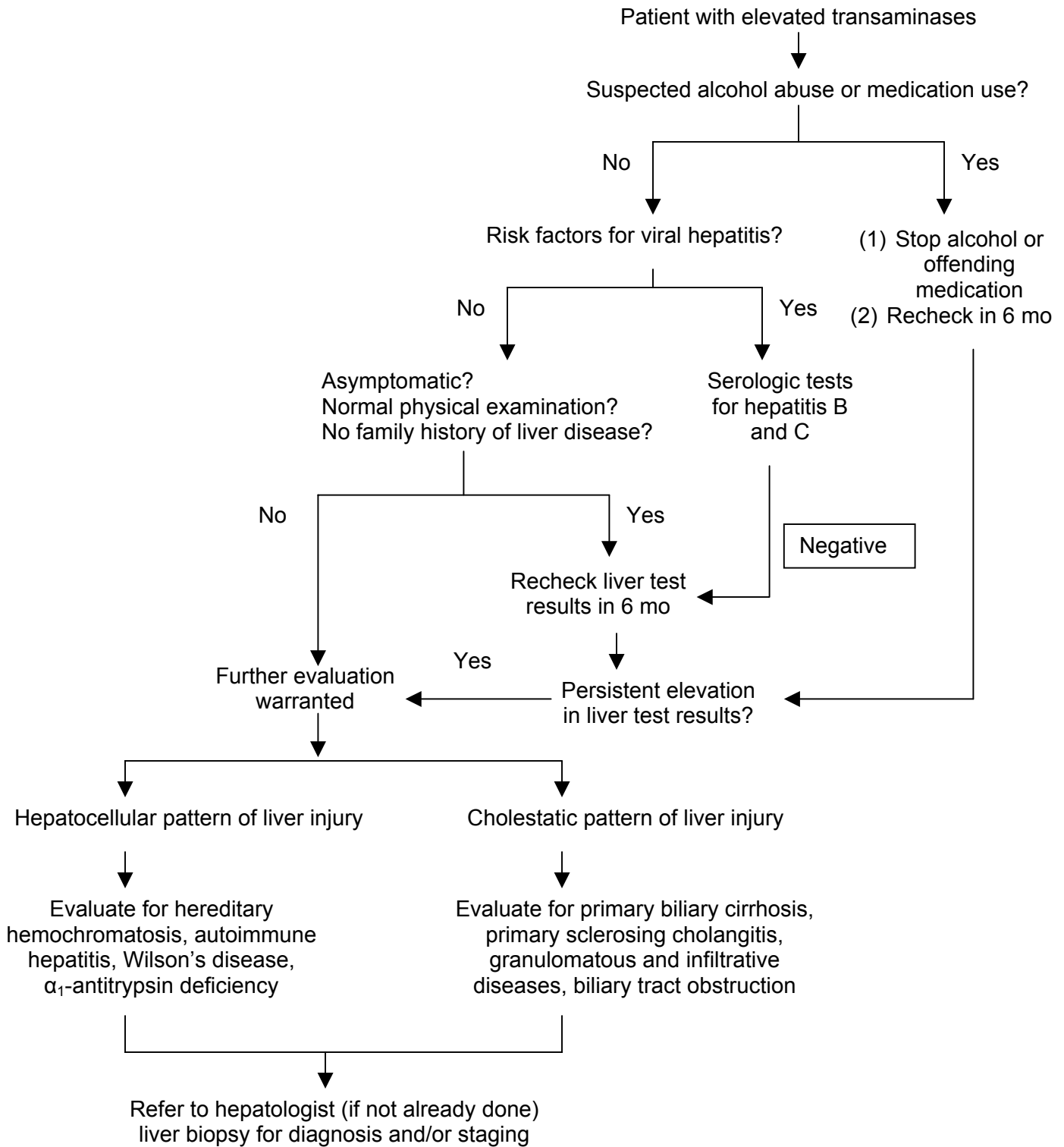


Appendix 3: Algorithm for evaluation of abnormal liver tests



Adapted with permission from: Mallory AM, Lee SW, Kowdley KV. Abnormal liver tests on routine screening. How to evaluate, when to refer for biopsy. *Postgraduate Medicine* 2004; 115 (3 (March)):53-62. Accessed July 6, 2004. © The McGraw-Hill Companies <http://www.postgradmed.com>

© The Foundation for Medical Practice Education, www.fmpe.org