

Appendix 1

Using the Mantoux Screening Test to Guide Management

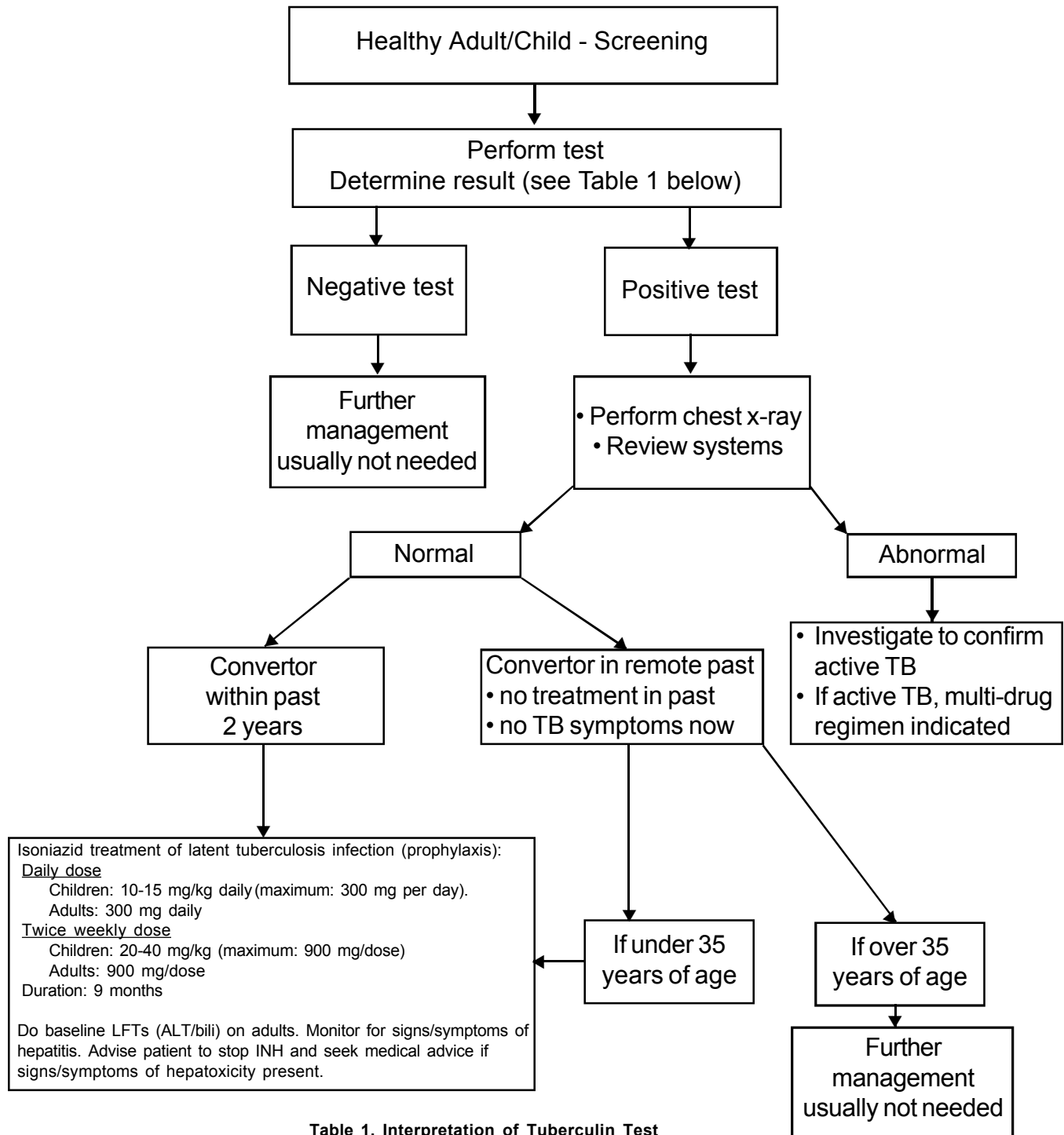


Table 1. Interpretation of Tuberculin Test

Tuberculin reaction size mm induration	Considered "test positive"
0-4	<ul style="list-style-type: none"> HIV infection and risk of TB infection is high (e.g., patient is an immigrant from a TB-endemic country, is a household contact of persons with active TB, or has an abnormal radiograph). This reaction size is not normally considered significant, but may be important in the presence of immune suppression by HIV.
5-9	<ul style="list-style-type: none"> HIV infection but TB risk is low Close contact with persons with active TB Abnormal chest radiograph with fibronodular disease
≥ 10 mm	<ul style="list-style-type: none"> All others

Algorithm adapted from:
Pennie RA. Mantoux tests.
Performing, interpreting, and acting
upon them. *Canadian Family
Physician* 1995;41:1025-29.

Table adapted from: The Canadian Lung Association, Canadian Thoracic Society and Tuberculosis
Prevention and Control. Canadian Tuberculosis Standards 5th Edition. Centre for Infectious Disease
Prevention and Control, Health Canada 2000.